



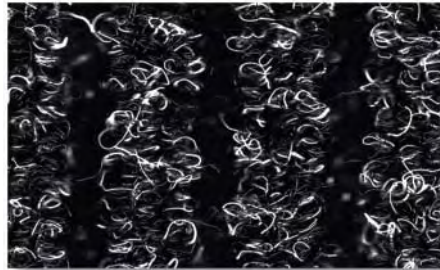
Melflor

Interior / Exterior Marine Carpet

Nautica™ Rib



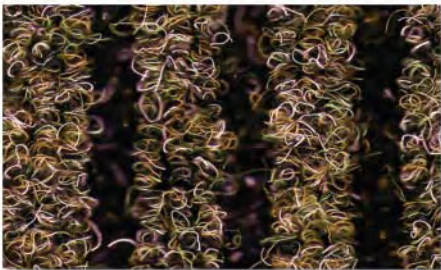
Silver



Graphite



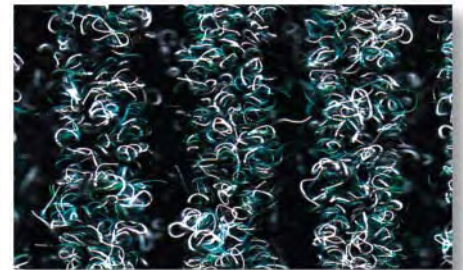
Swordfish



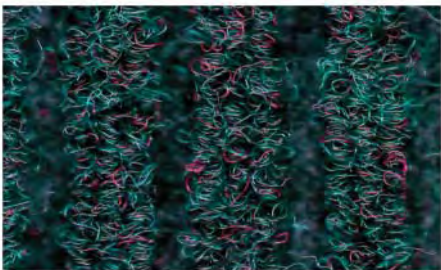
Agate



Chicory



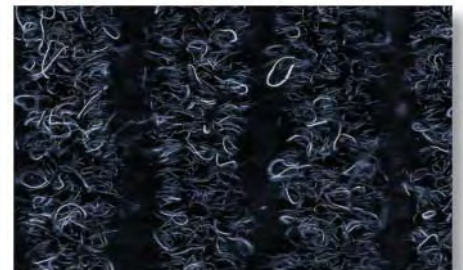
Pacific



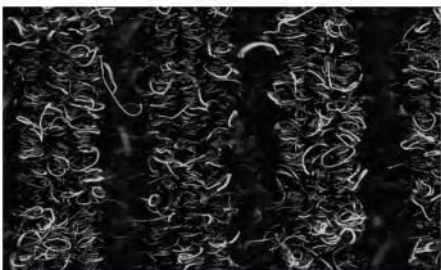
Malachite



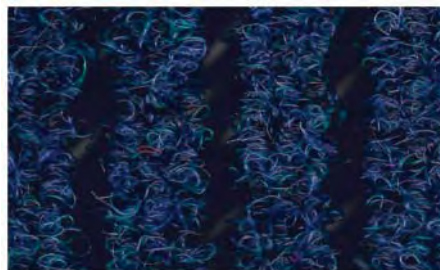
Ultramarine



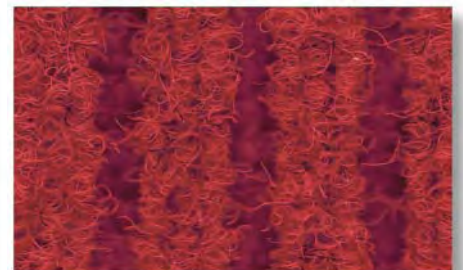
Cobalt



Stingray



Marlin*



Vulcan*

*Minimum Order Quantities Apply

Nautica™ Rib has been specifically designed for use in all flooring and deck applications in the marine market.

Nautica™ Plush and Rib

Interior / Exterior Marine Carpet

Areas of Use

Plush

Nautica™ Plush has been developed for use in all marine flooring and decking applications. The smooth velour texture is easy to clean and maintain, is not affected by moisture and will not support the growth of mould and mildew.

Nautica™ Plush is manufactured using UV stabilised polypropylene fibre resulting in an extremely durable carpet that will provide many years of outdoor use.

Nautica™ Plush is covered by a full 3-year manufacturer's warranty for outdoor use.

Rib

Nautica™ Rib has been specifically designed for use in all flooring and deck applications in the marine market.

The heavy duty ribbed construction provides excellent wear properties in harsh environments. Made from UV stabilised polypropylene fibre, Nautica™ Rib is not affected by wet conditions and is covered by a full 3-year manufacturer's warranty for outdoor use.

Beware of imitations

Quality & Environmental Standards

Manufactured under ISO9001 International Quality Standard, ensuring consistent quality & performance levels. Certified for compliance to Environmental Management System ISO14001.

UV stabilized to prevent colours from fading

Exclusive Three-Year Warranty against material defects



Flammability: AS/ISO 9239.1.2003

*Flammability test certificate available on request



UV stabilized to prevent colours from fading



MADE IN AUSTRALIA

by Melded Products Group Pty Ltd
A.B.N. 12 005 305 233

Texture	Plush Velour Rib
Colours	12
Fibre Composition	100% Polypropylene
Backing / Bonding	Latex
Roll Length (nominal)	25 metres
Roll Width	200cm <small>*Supplied at 206cm for on-site trimming</small>
Weight Plush	950 gm/m ² +/- 10%
 Rib	950 gm/m ² +/- 10%



Manufactured by

Melded Products Group Pty Ltd.

3 Healey Rd Dandenong VIC 3175, AUSTRALIA.

Tel: 61 3 8791 9200 • Fax: 61 3 9706 5481

For full colour range and specifications

Contact: **(61 3) 8791 9200**

E-mail: **sales@meldedproducts.com**

Website: **www.melledproducts.com**

Current stock may vary from these samples. All information contained herein is given in good faith but without warranty. Freedom from patent rights must not be assumed. Melded Products Group reserves the right to alter specifications at any time without notification.

CODE:
NAUT 2PP 10-10